

Quicksleeper[®]



DHT

DENTAL HI TEC

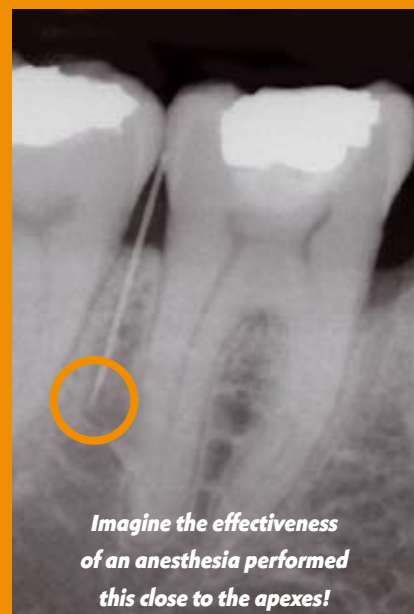
Innovation for dental anesthesia

www.dentalhitec.com

DENTAL HI TEC

QuickSleeper[®] and Osteocentral Anesthesia

Associated with Osteocentral anesthesia, QuickSleeper will enable you to obtain the best results in anesthesia, whatever the site or pathology.



More effective

- > Easily anesthetize mandible molars without failure, even with pulpitis.
- > Work in sectors (up to 8 teeth), with only one injection & one cartridge.

Time saving

- > Perform and succeed all of your anesthetics in less than 3 minutes*.
- > Put an end to multiple injections.
 - No additional palatal or lingual anesthesia even for an extraction
 - No complementary intraligamentary or intrapulpal...
- > Start working as soon as the injection is complete, no more time wasting waiting for your anesthesia to take.

More comfortable

- > No postoperative side effects
 - Periodontal ligament pain
 - Soft tissue numbness
 - Necrosis
- > No twisting needles or leaks during injection.
- > Maximum precision thanks to a pen grip enabling the use of effective support points.
- > Access a serenity in anesthesia unknown until now.
 - Painfree, even for children
 - Possibility to treat emergencies quickly and efficiently
 - No muscular effort
 - No more stress linked to unsuccessful anesthesia

Your daily practice is going to change!

* 500 cases of transcortical anesthesia carried out as the first choice. SSO (Schweiz Monatsschr Zahnmed) Vol. 113 Issue 11 Pg. 1207-14 (2003) ISSN: 1011-4203 Switzerland. PMID14699952

The time starts from the assembling of the cartridge and needle and finishes at the start of the treatment.



Anesthesia of 47-46



Example of support points



Painfree and without numbness of the lips or cheeks.

For more information about QuickSleeper[®] : www.dentalthitec.com (videos, protocol, news...)



QuickSleeper[®]

Your everyday clinical applications

- > An emergency on a lower 7 with pulpitis anesthetized in 3 minutes, in complete serenity.
- > Extraction of 35 and 45 for a teenager performed in the same appointment, with no additional lingual anesthesia and no pain.
- > A deep scaling performed with one injection between the central incisors, with no soft tissue numbness.
- > Implantology work performed with low hemostasis for better visibility.
- > For children, a completely painfree anesthesia enabling to treat multiple teeth and no risk of lip biting.
- > Maxilla extractions with no additional palatal anesthesia and no soft tissue numbness.
- > A fast, simple and effective anesthesia of the mandible molars...

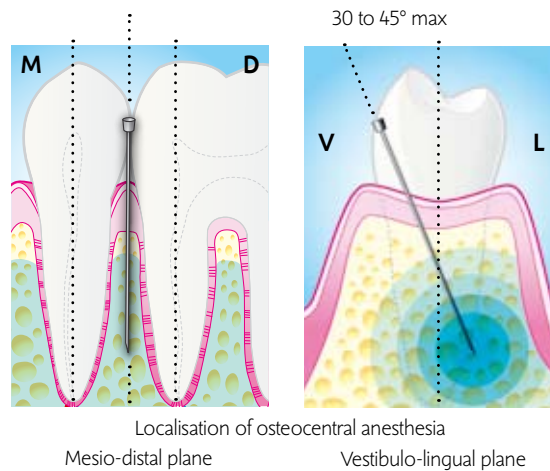


The Principal of osteocentral anesthesia

By placing the anesthetic product **in the centre of the spongy bone**, this anesthesia offers effectiveness far superior to that of any other technique and enables the use of vasoconstrictors (1/100 000 and more) with absolutely no risk of necrosis.

The penetration is performed with a \varnothing 0.3mm – 16mm needle, through the summit of the septum, where the cortical is the thinnest. Osteocentral anesthesia differs due to the depth of the needle penetration (90% minimum) for an injection as close as possible to the apex. This ensures an incomparable anesthetic power (no product dilution) which eliminates failures.

The quantity injected determines the number of teeth anesthetised, the duration and the power of the anesthesia.



Performed with **QuickSleeper**, this technique is extremely simple and the advantages can be observed immediately.

An easy protocol



1 Completely painfree anesthesia of the attached mucosa.



2 Needle rotation for a penetration very close to the apex.



3 Osteocentral injection: the anesthesia is instantaneous and with unequalled effectiveness.

The injection and needle rotation parameters are electronically managed by the device.



QuickSleeper®

DENTAL HI TEC

The QuickSleeper[®] system

Easy integration & cost effective

QuickSleeper can be easily and quickly integrated into your daily practice.



Security system to recap your needles without risk of contamination



Wall mounted or flat installation of the control unit.



All of the accessories are sterilisable in the autoclave (134°C or 275°F), the cartridges and needles are standard ensuring minimal operating costs.



QuickSleeper sterilisable accessories.

Technical characteristics:

QuickSleeper is composed of a pedal, control unit, handpiece, batch of sterilisable accessories, user guide and Starter pack of 100 DHT Needles.

Length of wires and cables:

Mains connection: 2000 mm
Pedal cable: 2000 mm
Handpiece cable: 2000 mm

Handpiece:

Overall dimensions:
Diameter: 16/26 mm
Length: 228 mm
Weight: 240 g

Control unit:

Overall dimensions:
Length: 177 mm
Width: 172 mm
Height: 42 mm
Weight: 222 g

Pedal:

Overall dimensions:
Length: 185 mm
Width: 145 mm
Height: 33 mm
Weight: 320 g

2 year guarantee

During the manufacturing process, our devices are all tested on over 200 control points. This quality enables us to guarantee QuickSleeper for 2 years* parts and labor.

* under certain conditions & excluding accessories.

QuickSleeper[®]

