

V3 Instruction Guide

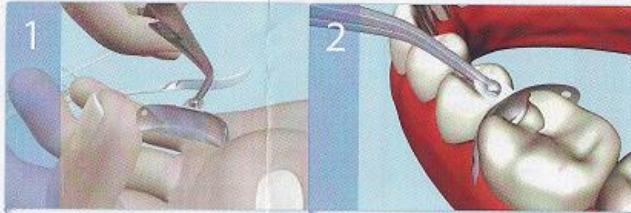
Introduction

Thank you for purchasing the V3 Ring Sectional Matrix System.

To gain the maximum satisfaction and benefit for your client and yourself from the V3 Ring Sectional Matrix System TrioDent strongly recommends you carefully read the instructions here and view the training animation found on our website. Training material can also be ordered in CD and DVD format. Even if you are familiar with other sectional matrix systems, there are many practical tips found in these materials and on our website that will help you take advantage of the special features of the V3 Ring system.

Warnings

- Always use a rubber dam to prevent items from being inhaled or swallowed by patient.
- Consumable items are for single use only.
- To ensure complete sterility autoclave V3 Rings, Forceps, and Pin-Tweezers before use (max. temp. 135°C).
- TrioDent Pin-Tweezers are recommended for use with TrioDent V3 Matrices and Wave- and V-Wedges. Pin-Tweezers minimize the possibility of unintentional release of the matrix or wedge before placement, and to allow removal of these components in a safe and controlled manner.
- US Federal law restricts this device to sale by or on the order of a dentist.
- Australian TGA Approved no. 110268. FDA and MedSafe approved. CE Mark. Authorized Representative: TrioDent (UK) Ltd, 1st Floor, 64 Baker Street, London W1U 7GB, UK.

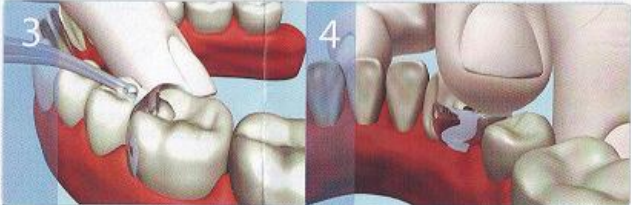


Grip the tab on the V3 Matrix with the Pin-Tweezers and fold the tab towards you. This enables you to easily slide the matrix into the embrasure in an apical direction.

In addition, squeeze the wings a little to increase the curvature of the matrix as this provides more room for the V3 tines later.

Place the matrix directly into the embrasure, taking care to ensure that the matrix is in the gingival crevice adjacent to the tooth you are restoring.

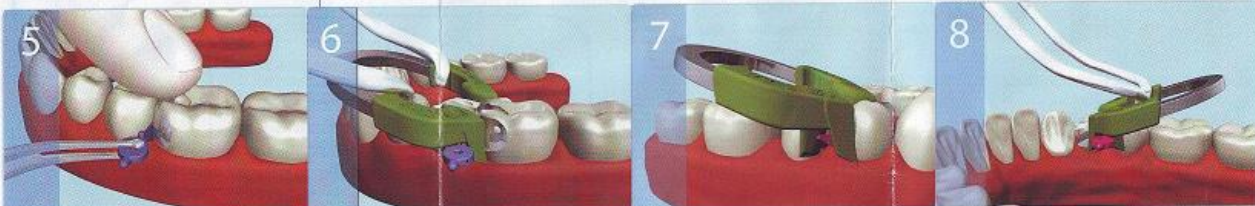
If the cavity is an MO the matrix needs to be turned around but the tab still needs to be folded towards you.



While holding the matrix wing against the buccal or lingual surface of the tooth with your MIDDLE finger or thumb, release the tweezers. Using the tips of the tweezers fold the tab over so that it sits above the marginal ridge of the neighboring tooth.

This is unnecessary for an MO cavity.

While still holding the matrix on the buccal or lingual side, trap the tab with your fore-finger. If the tab is not exactly centered, you can make small adjustments with your middle-finger before trapping the tab against the marginal ridge of the neighboring tooth.



Keep your fore-finger on the tab to prevent it moving. Ask your assistant to place an appropriately sized Wave-Wedge or V-Wedge in the Pin-Tweezers. Insert the wedge from the right-hand side (assuming you are right-handed) and push it in firmly.

Ask your assistant to pass you the V3 Ring already on the forceps with the lock on. **DO NOT RUSH THIS PART!** Using a finger-rest to steady the forceps, move the V3 Ring into position so that it straddles the wedge.

Make sure the ring is in direct contact with the wedge and will not move any further in an apical direction.

The image above shows the V3 Ring in position from the buccal view.

Note how the tips of the tines are close to the gingival margin and the V-slot of the V3 Ring is touching the wedge.

Sometimes, it is better to place the V3 Ring with the spring facing backwards, as shown above.

One example is an MOD. The spring for the MO is placed as shown to the left and the spring for the DO is placed as above.



The image above shows a close-up of the V3 Ring placed backwards.

The tip of a Wave-Wedge is protruding through the V-shaped slot in the V3 Ring.

The V3 Ring system allows a second wedge to be easily placed from the other side. The second wedge can be fitted underneath the first wedge as shown above.

This feature gives the V3 Ring system unrivalled flexibility and enables the dentist to easily adjust the wedging without starting all over.

Occasionally your V3 Rings may need resetting, particularly if they have been over-opened. They can easily be reset by firmly squeezing the tines together as shown above.

Further Training?

Further training information is available at www.triodent.com. The same information can also be supplied on CD or DVD for a small handling fee. Please visit our website or contact us by email: enquiries@triodent.com.

Contact Us...

US: 1-800-811-3949
CA: 866-316-9007
UK: 0800-311-2097
NZ: 0800 TRIODENT
AU: 1800-350-421
SG: 1800-120-4772
SA: 0800-992-239

